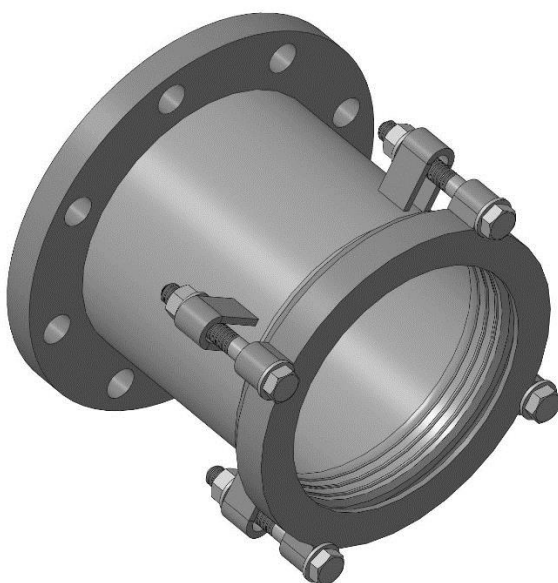




**Volzhskiy Zavod**  
**Promyshlennoy Armatury**

**Flange pipe coupling**  
(flange adaptor)



# **PRODUCT PASSPORT**

TU (Technical specifications) 25.99.29-006-21203517-2018

2022

# Flange pipe coupling (Flange adaptor)

## 1. General information

A flange adaptor is a type of mechanical fitting that allows access to a flange from a smooth pipe. Couplings are designed to connect steel, cast iron and asbestos-cement pipes with any elements of flange fittings. They are used on straight-line sections in sewage and water systems.

Medium temperature from 0°C to +110 °C.

Operating pressure: 1.0 MPa, 1.6 MPa, universal 1.0/1.6 MPa.

Manufactured for 50 to 1200 mm diameter pipes.

Maximum angular deviation up to 4°.

Mounting flange dimensions comply with GOST 33259-2015 (GOST 12820-80).

## 2. Product components.

The flange adaptor consists of a body, collars, caps, and metalware (Fig. 1).

The first standard version is made of metal or cast-iron clamp hub with a flange on the narrow side. The body is coated with a safety epoxy powder with a 250-micron thick layer. Coating color RAL5005.

The second standard version is made of AISI 304 stainless steel.

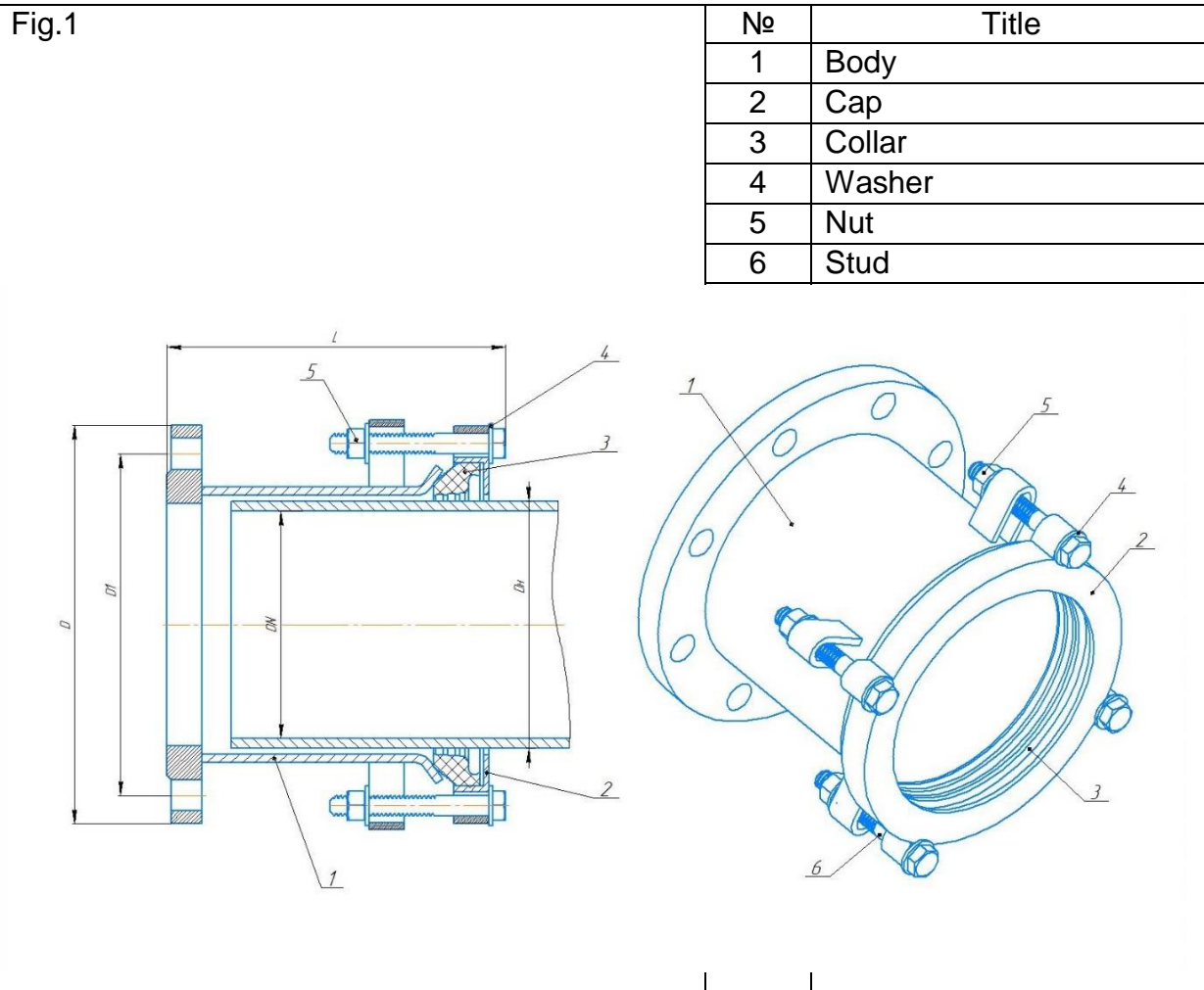
The collar is a ring cast out of EPDM rubber (GOST ISO 4097-2013).

The cap is a metal or cast iron ring with holes for studs. It is coated with a safety epoxy powder with a 250-micron thick layer. Coating color RAL5005.

Metalware is studs, nuts, and washers coated with a zinc safety coating. The studs have knurled threads. Each stud comes with a washer and a nut. The metalware strength index is not lower than 6.8. The size and number of studs are indicated in the specification sheet. Metalware is made of galvanized steel.

The flange pipe coupling can be manufactured of AISI 304 stainless steel, including caps and metalware.

The coupling is manufactured according to the current technical documentation of the manufacturer TU 25.99.29-006-21203517-2018, certificate of conformity No. 0013973



**3. Dimensions chart**

Name	Body material	DN, mm	DH min, mm	DH max, mm	D, mm 1 /1,6 MPa	D1, mm 1/1,6 MPa	L, mm 1/1,6 MPa	Stud
PFRK-50-1	metal	50	53	68	160	125	179	2*M12
PFRK-50-2	metal	50	57	73	160	125	179	2*M12
PFRK-50	cast iron	50	59	72	160	125	145	2*M12
PFRK-65-1	metal	65	65	80	180	145	181	2*M12
PFRK-65-2	metal	65	72	85	180	145	181	2*M12
PFRK-80-1	metal	80	85	100	195	160	181	4*M12
PFRK-80-2	metal	80	88	105	195	160	181	4*M12
PFRK-100-1	metal	100	102	125	215	180	183	4*M12
PFRK-100-2	metal	100	106	130	215	180	183	4*M12
PFRK-100	cast iron	100	109	128	215	180	145	4*M12
PFRK-125	metal	125	125	149	245	210	185	4*M12
PFRK-150-1	metal	150	158	182	280	240	185	4*M12
PFRK-150	cast iron	150	159	182	280	240	145	4*M12
PFRK-175	metal	175	183	207	330	280	185	4*M12
PFRK-200-1	metal	200	205	229	335	295	222	6*M14
PFRK-200-2	metal	200	218	235	335	295	222	6*M14
PFRK-200	cast iron	200	218	235	335	295	145	6*M14
PFRK-225	metal	225	244	268	365	325/325	222	6*M14
PFRK-250-1	metal	250	270	294	405	350/355	223	6*M14
PFRK-250	cast iron	250	272	289	405	350/355	155	6*M14
PFRK-300	metal	300	315	340	460	400/410	223	6*M14
PFRK-300	cast iron	300	322	339	460	400/410	155	6*M14
PFRK-350-1	metal	350	351	375	520	460/470	225	8*M16
PFRK-350-2	metal	350	365	389	520	460/470	225	8*M16
PFRK-400-1	metal	400	390	414	580	515/525	229	8*M16
PFRK-400-2	metal	400	402	426	580	515/525	229	8*M16
PFRK-400-3	metal	400	418	442	580	515/525	229	8*M16
PFRK-500-1	metal	500	491	515	670/710	620/650	223/239	10*M16

PFRK-500-2	metal	500	505	529	670/710	620/650	223/239	10*M16
PFRK-500-3	metal	500	524	548	670/710	620/650	223/239	10*M16
PFRK-500-4	metal	500	553	577	670/710	620/650	223/239	10*M16
PFRK-600-1	metal	600	606	630	780/840	725/770	226/240	10*M16
PFRK-600-2	metal	600	630	654	780/840	725/770	226/240	10*M16
PFRK-700-1	metal	700	709	733	895/910	840/840	279/292	12*M16
PFRK-700-2	metal	700	718	742	895/910	840/840	279/292	12*M16
PFRK-700-3	metal	700	736	760	895/910	840/840	279/292	12*M16
PFRK-800-1	metal	800	796	820	1010/1020	950/950	282/294	12*M16
PFRK-800-2	metal	800	809	833	1010/1020	950/950	282/294	12*M16
PFRK-800-3	metal	800	817	841	1010/1020	950/950	282/294	12*M16
PFRK-800-4	metal	800	839	863	1010/1020	950/950	282/294	12*M16
PFRK-900-1	metal	900	899	923	1110/1120	1050/1050	285/299	14*M16
PFRK-900-2	metal	900	913	937	1110/1120	1050/1050	285/299	14*M16
PFRK-900-3	metal	900	919	943	1110/1120	1050/1050	285/299	14*M16
PFRK-900-4	metal	900	945	969	1110/1120	1050/1050	285/299	14*M16
PFRK-1000-1	metal	1000	996	1020	1220/1255	1160/1170	288/303	14*M16
PFRK-1000-2	metal	1000	1012	1036	1220/1255	1160/1170	288/303	14*M16
PFRK-1000-3	metal	1000	1016	1040	1220/1255	1160/1170	288/303	14*M16
PFRK-1000-4	metal	1000	1045	1069	1220/1255	1160/1170	288/303	14*M16
PFRK-1200-1	metal	1200	1200	1224	1455/1485	1380/1390	296/316	16*M16
PFRK-1200-2	metal	1200	1219	1243	1455/1485	1380/1390	296/316	16*M16
PFRK-1200-3	metal	1200	1255	1279	1455/1485	1380/1390	296/316	16*M16

#### 4. Package set

Coupling assembly – 1 pc., product passport – 1 per lot

#### 5. Product storage and transportation

Couplings are delivered pre-assembled and packed in corrugated cardboard boxes. Storage conditions of the product must comply with groups 1, 2 of GOST 15150-69. Use a covered vehicle during transportation and, if needed, additionally pack the product to avoid any significant deformation of the factory box and the clamp body

#### 6. Installation instructions

Prior to installation, please make sure that the pipe on which you are going to assembly the coupling is clean. Attach the coupling onto the pipe with the flange facing out. Press the cover against the body while evenly tightening the nuts on the studs. Attach the required fittings to the flange.

#### 7. Disposal

Upon the expiration of the service period, the product can be disassembled into parts: steel, rubber and sent for recycling, or you can dispose of in accordance with the procedure established at the enterprise where this product is used, drawn up in accordance with the Laws of the Russian Federation No. 96-FZ «On the Protection of Atmospheric Air», No. 89-FZ “On Production and Consumption Wastes”, No. 52-FZ “On the sanitary and epidemiological well-being of the population”, and other Russian and regional regulations, acts, rules, orders, etc., which implement these laws.

#### 8. Manufacturer's warranty

The product that has been stored, installed, and operated according to this Product Passport has a 24-month warranty period from the date of its purchase. The expected service period is 10 years.

---

Manufacturer: "Volzhskiy Zavod Promyshlennoy Armatury" LLC, Samara region, Togliatti, Vokzalnaya str., 1a. tel. +7-987-430-22-11 (WhatsApp), [www.vzpa.ru](http://www.vzpa.ru), [info@vzpa.ru](mailto:info@vzpa.ru)